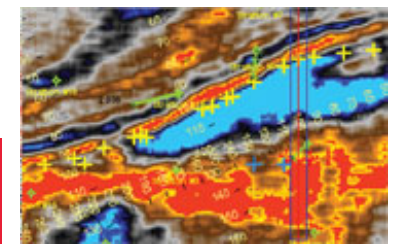
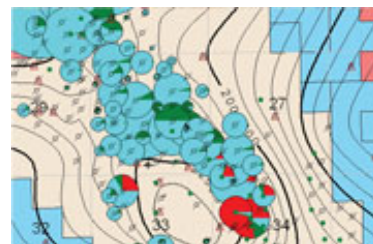
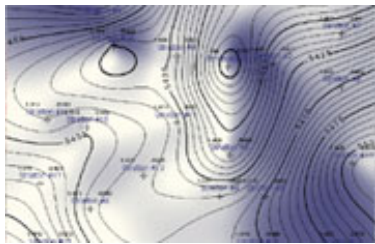


Seismic Micro-Technology, Inc.



KINGDOM Security

For SQL Server and Oracle environments



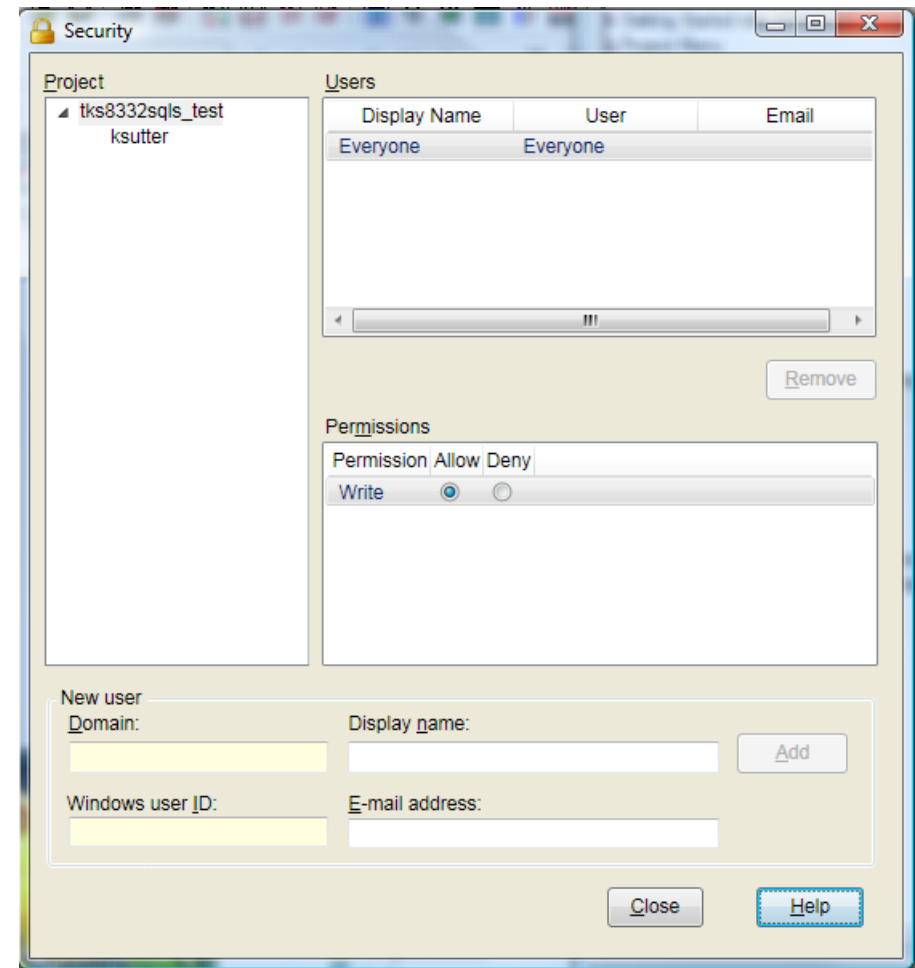
Protecting your Assets

- Kingdom Security allows companies to secure their assets by restricting the level of access to project data within SQLServer or Oracle Kingdom projects.
- Interpreters within an organization may be granted full access to all data in a KINGDOM project, while consultants may be granted access to a limited set of data only within the same project



KINGDOM Security Module

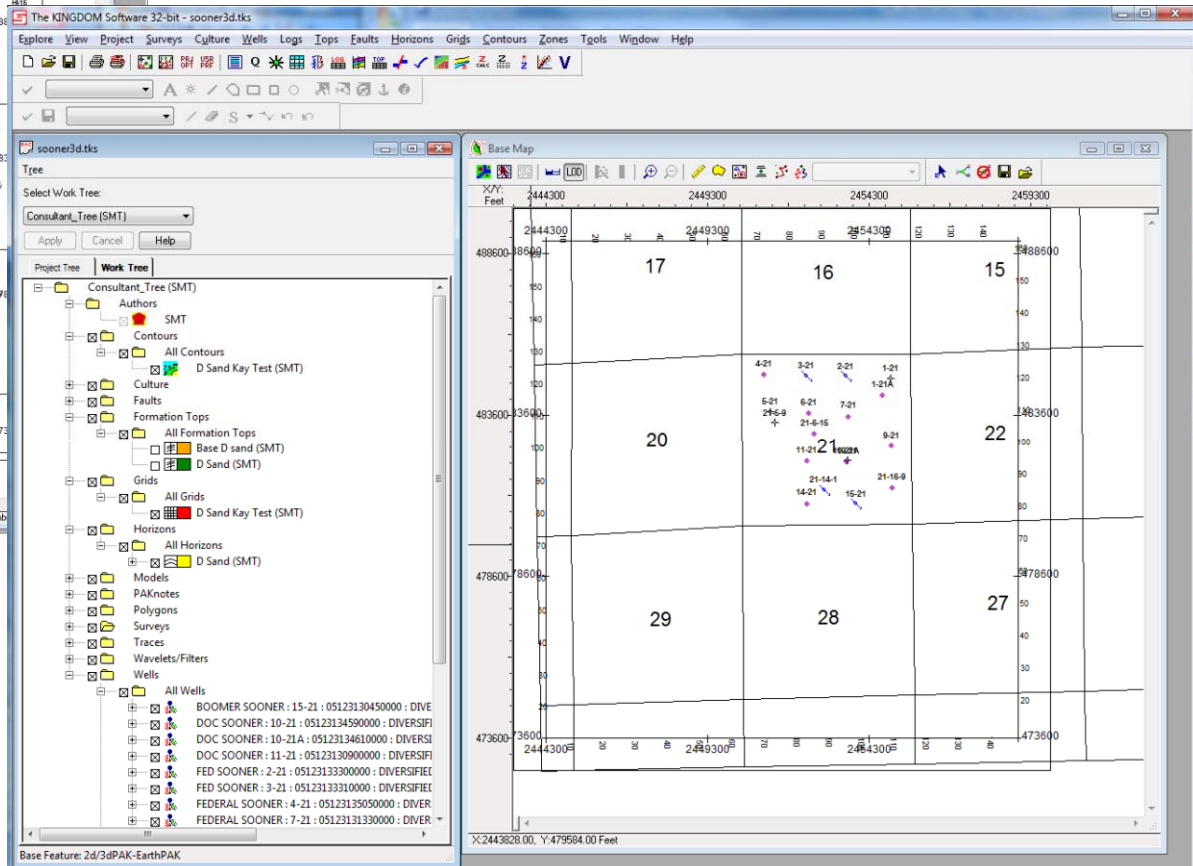
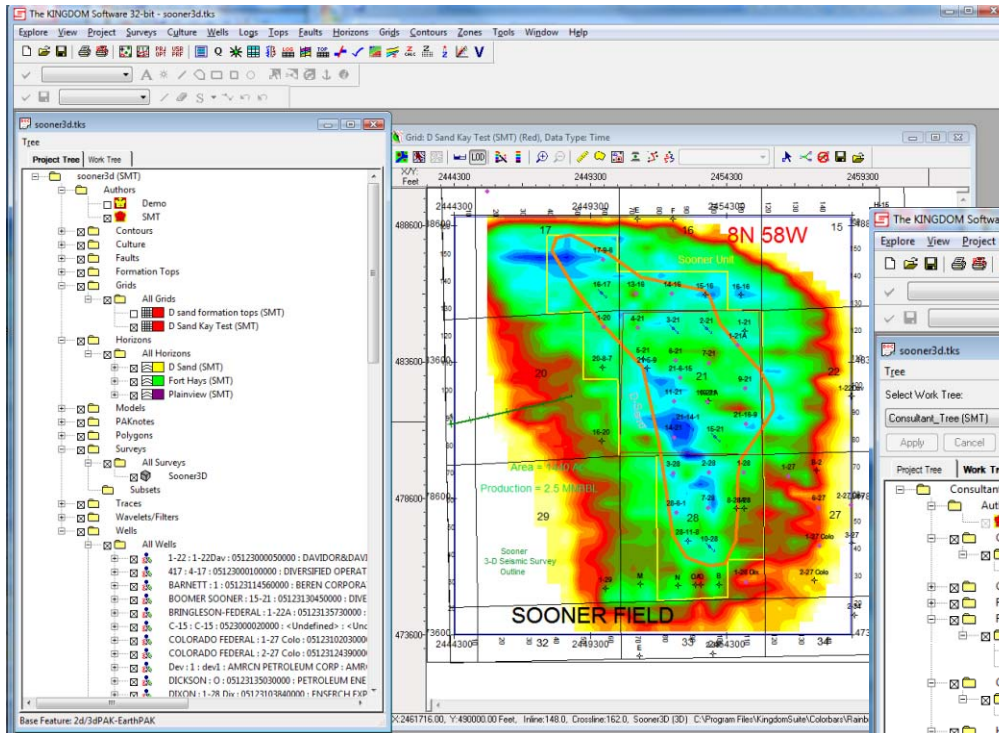
- Accessible from any Oracle or SQLServer KINGDOM project
- Access types
 - Access Allowed (Everyone)
 - Restrict specified users to authors/work trees
 - Deny specified users access to project
 - Access Denied (Everyone)
 - Allow specific users full access
 - Allow specified users restricted access to author/Work Tree





Securing Project Data

Authorized users may have full access to all project data in the Project Tree



Restricted users may access only data made available in the assigned Author's Work Tree

Benefits

- Data-level security is provided without ever having to create a separate project.
- Any user may be granted access or excluded from a project.
- Any user may be granted access to only a specified Author and it's associated Work Tree
- All security access is defined through a single, easy-to-use interface.